

# CLOCC

## Clean Oceans through Clean Communities

Vienna Energy Forum 2021

Oda Korneliussen, Avfall Norge  
Aditi Ramola, ISWA

*5 July 2021*

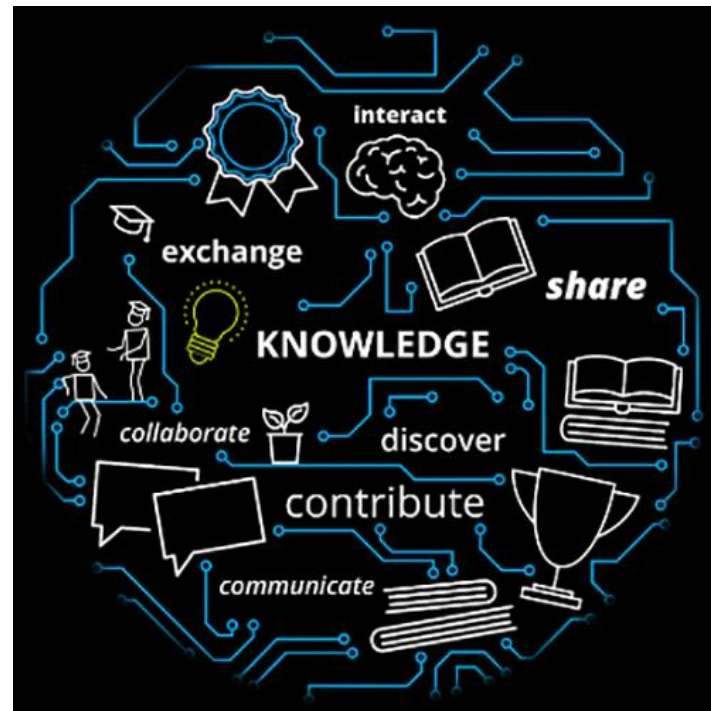
# About Avfall Norge

- Represent the waste and recycling industry in Norway
- 200 member organizations
- Promotes and develops socially responsible and environmentally sound waste management practices and policies



# Our contribution

- Long experience with Norwegian waste management
- Norway's waste management has undergone a huge transformation
- We want to use and share our experience and knowledge internationally





# Cleaning Up Our Oceans Starts with Changing What We Do On Land



# What is CLOCC?

## **CLOCC (Clean Oceans through Clean Communities)**

Is an initiative by Avfall Norge that came to life in 2018.



## **ISWA (International Solid Waste Association)**

CLOCC is implemented in close cooperation between Avfall Norge and ISWA.



## **Norad (The Norwegian Agency for Development Cooperation)**

Is our main source of funding, with a budget of 40 million NOK from 2018-2023. We're part of the Norwegian government's development programme to reduce marine plastic pollution and microplastics.



## Our vision is

to achieve sustainable societies, healthy oceans and a clean environment

through inclusive and sustainable waste management, responsible use of resources, jobs and business opportunities in circular value chains.



# Partners

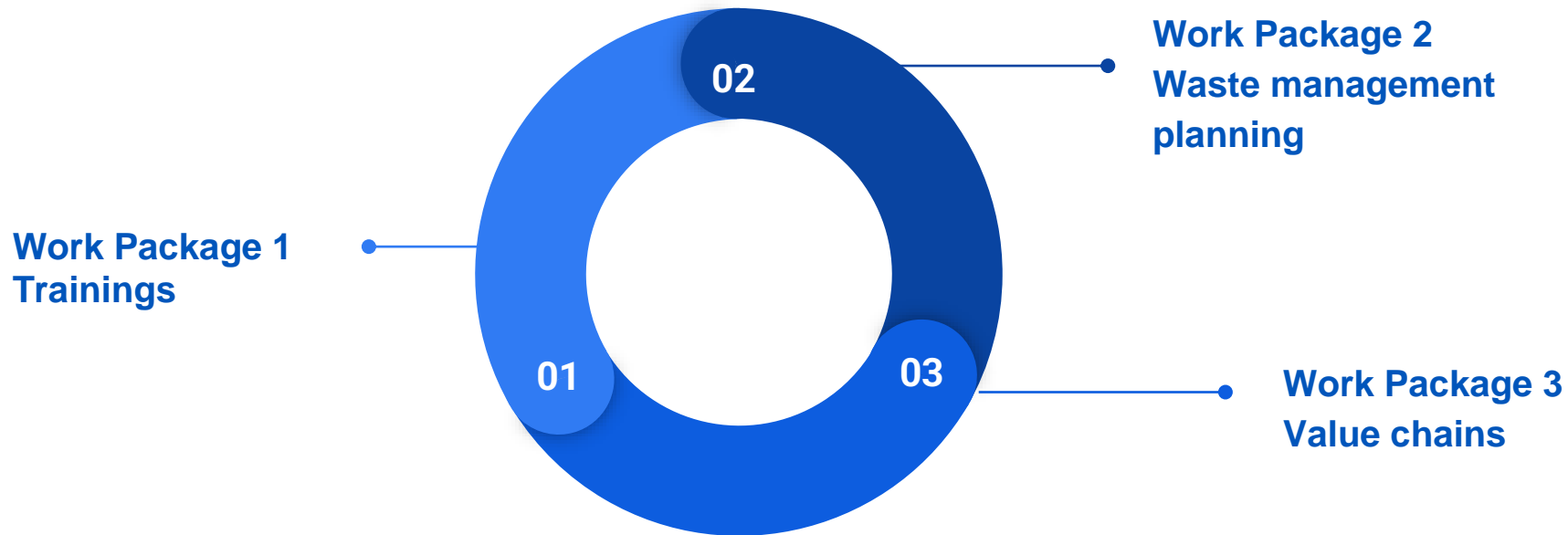
Cooperation and partnering with other organisations is at the core of our strategic approach, in order to enhance capacity and achieve results.

Avfall Norge, through CLOCC, is proud to be co-founder of the Waste Wise Partnership (WaP) to combine forces to enhance municipal solid waste management

Our main strategic partner is ISWA, while our partners in Indonesia are InSWA (Indonesia Solid Waste Association), Rethinking Recycling Academy and SYSTEMIQ.



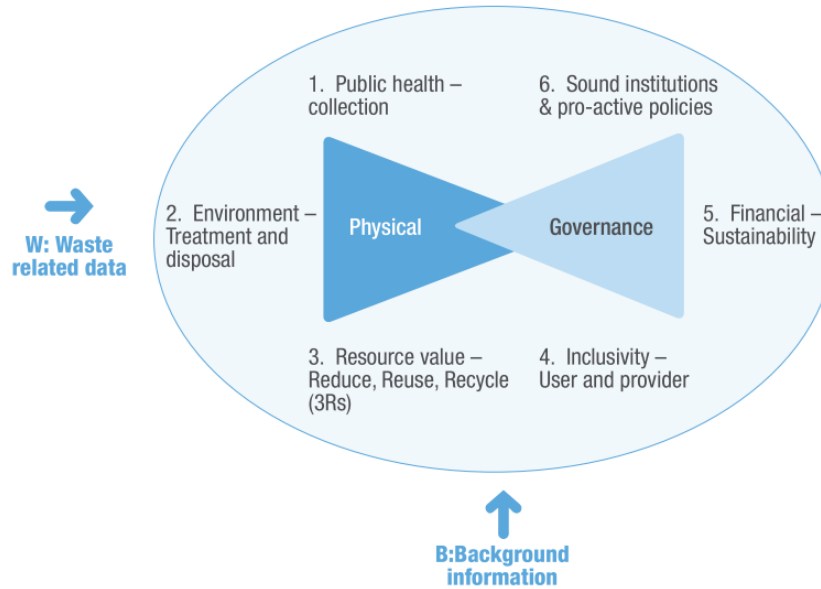
# Project implementation - work packages



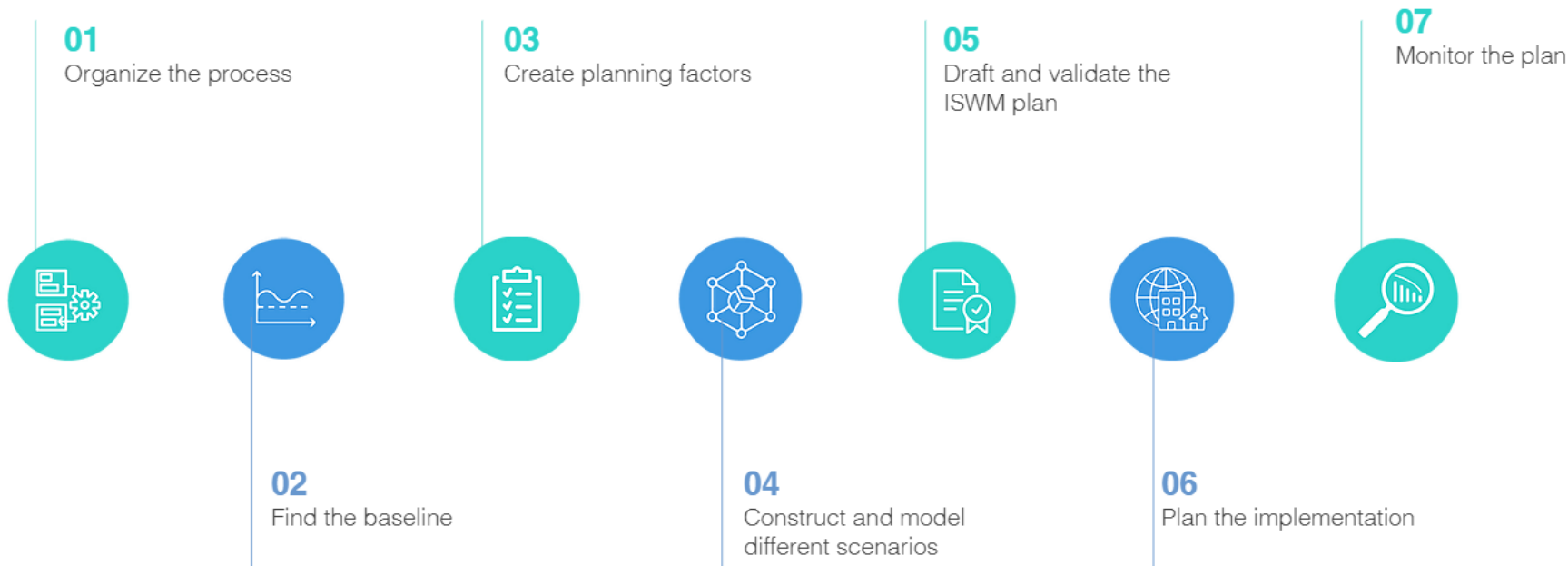


# Our approach

## Integrated Sustainable Waste Management (ISWM)



# 7 step ISWM planning approach



# Waste Wise Cities Tool – 7 Steps



# Our resources

We build capacity and skills in waste and resource management.

## Consultants



International and local consultants and waste management experts

## Practitioners



Experienced practitioners from the Norwegian waste management and recycling sector



# Key challenges

- Collaboration between many actors is needed.
- Top-down and bottom-up
- Banyuwangi regency has a WMP from 2017, but only 53 out of 189 villages have waste collection services.
- Access to funding matching local planning and needs
- Combining the “service chain” and the “value chain”
  - Integration of private and informal sector
  - Affordability, cost < 1-2% of income





**Learn more at**  
**[www.cloccglobal.org](http://www.cloccglobal.org)**

[oda.korneliussen@avfallnorge.no](mailto:oda.korneliussen@avfallnorge.no)  
[aramola@iswa.org](mailto:aramola@iswa.org)